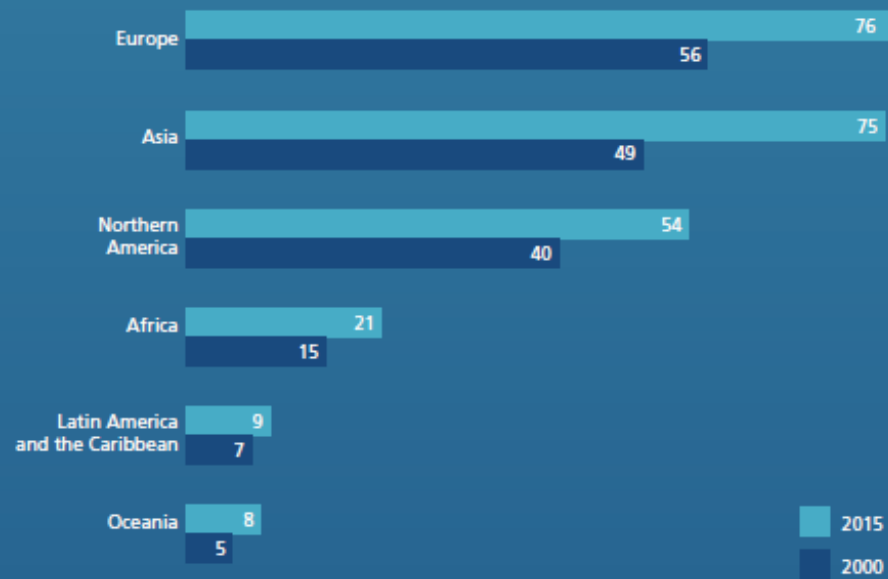


DOSSIER MIGRAZIONI

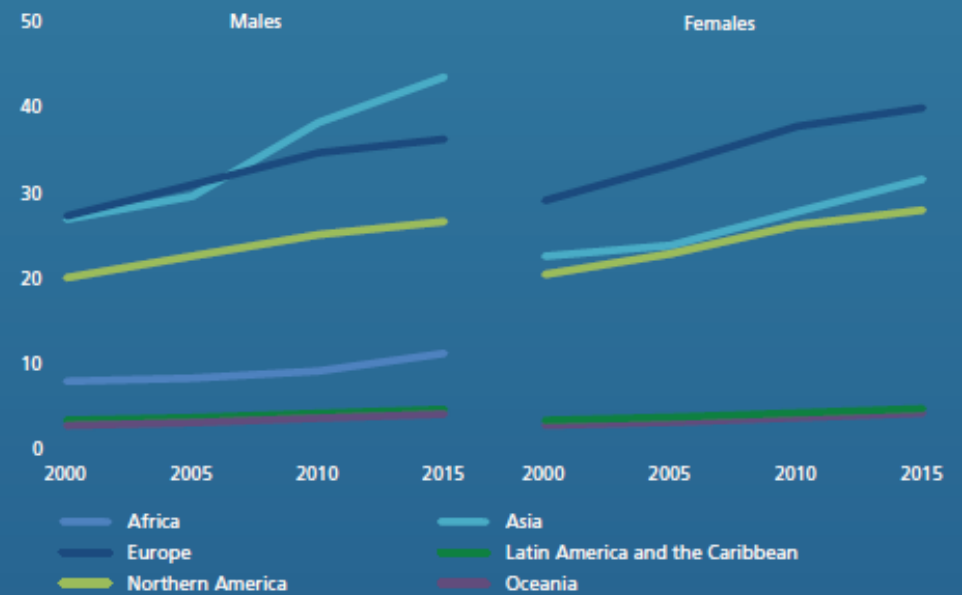
Grafici Nazioni Unite – International Migration 2015

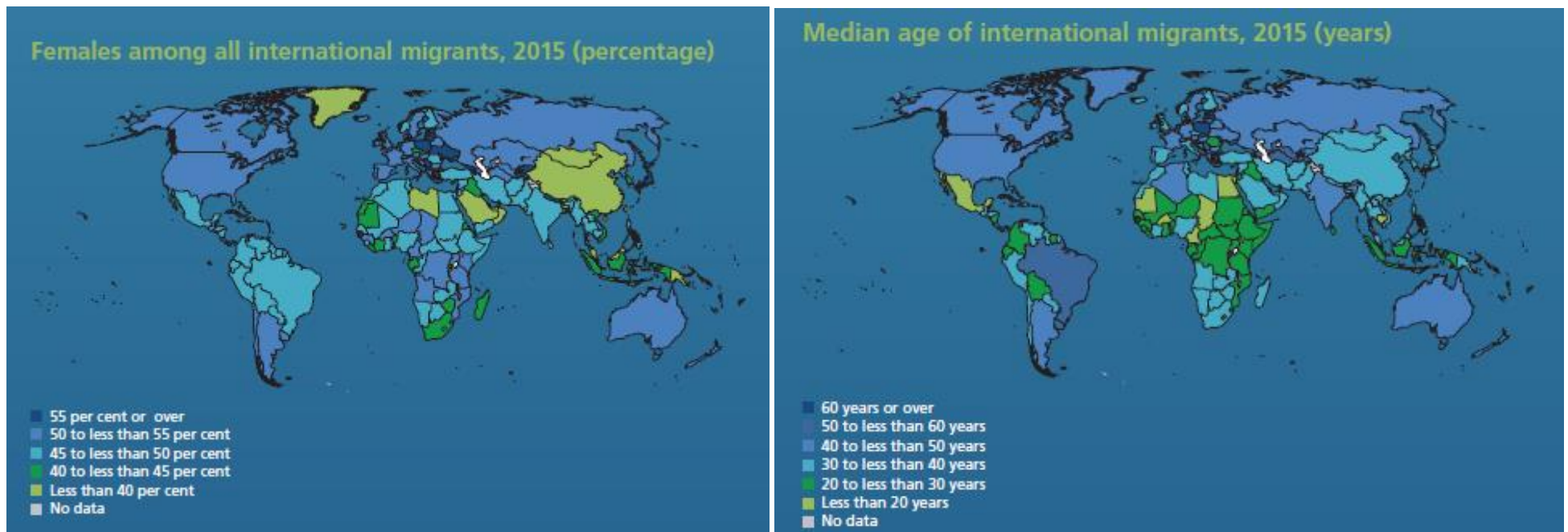
UN – INTERNATIONAL MIGRATION

International migrants by major area, 2000 and 2015 (millions)



International migrants by sex and major area, 2000 to 2015 (millions)

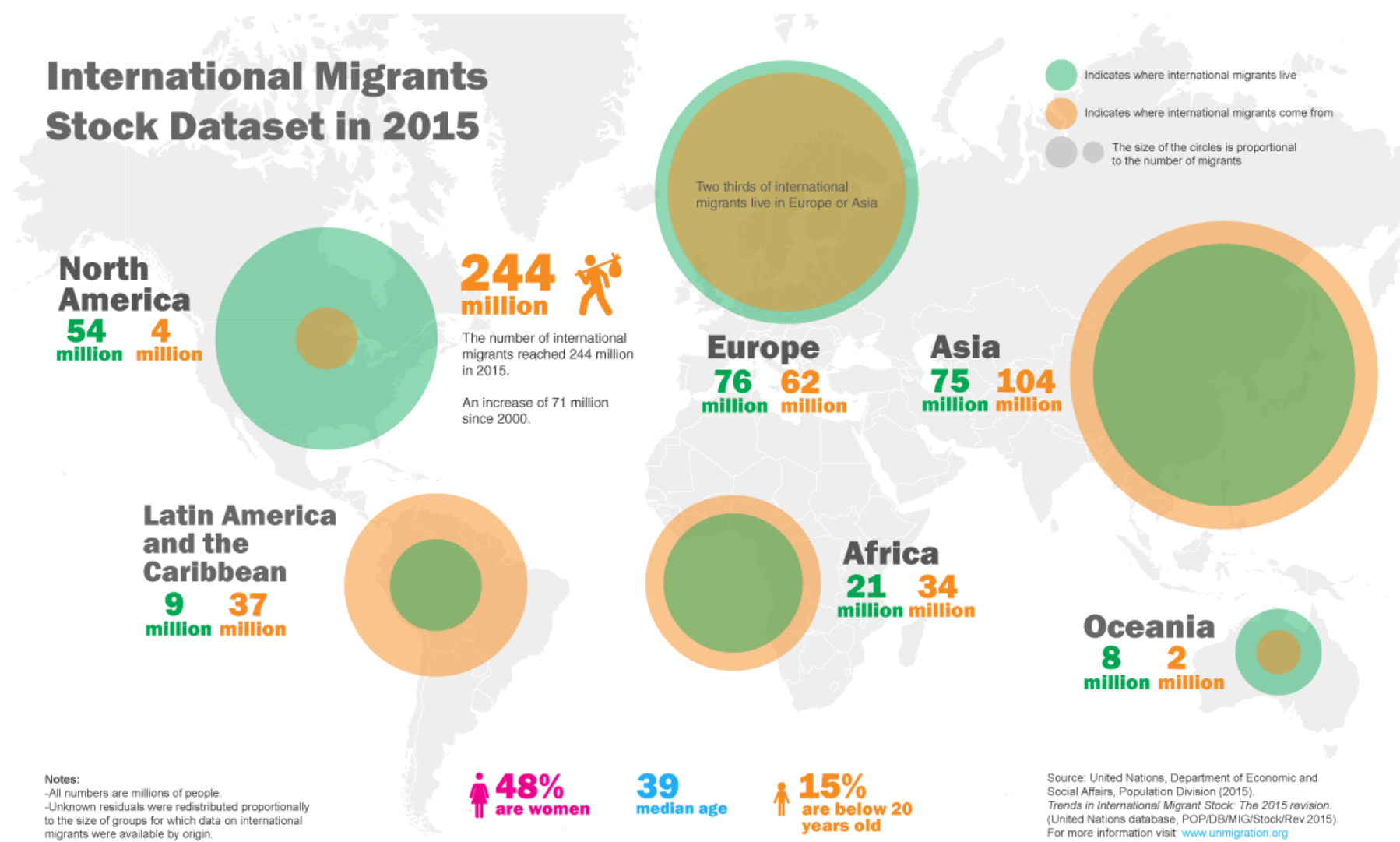




Data source: United Nations, Department of Economic and Social Affairs, Population Division (2015). Trends in International Migrant Stock: The 2015 Revision (United Nations database, POP/DB/MIG/Stock/Rev.2015).

Notes: The boundaries and names shown and the designations used on this map do not imply official endorsement or acceptance by the United Nations. Dotted line represents approximately the Line of Control in Jammu and Kashmir agreed upon by India and Pakistan. The final status of Jammu and Kashmir has not yet been agreed upon by the parties. Final boundary between the Republic of Sudan and the Republic of South Sudan has not yet been determined. Final status of the Abyei area is not yet determined.

International Migrants Stock Dataset in 2015



Notes:
 -All numbers are millions of people.
 -Unknown residuals were redistributed proportionally to the size of groups for which data on international migrants were available by origin.

Source: United Nations, Department of Economic and Social Affairs, Population Division (2015). *Trends in International Migrant Stock: The 2015 revision*. (United Nations database, POP/DB/MIG/Stock/Rev.2015). For more information visit: www.unmigration.org